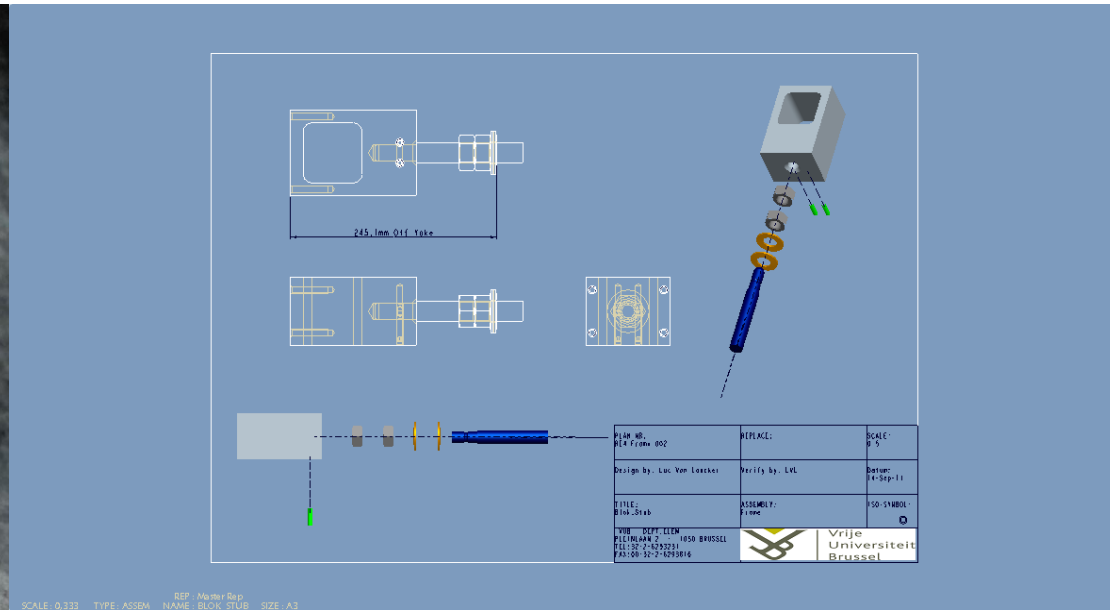
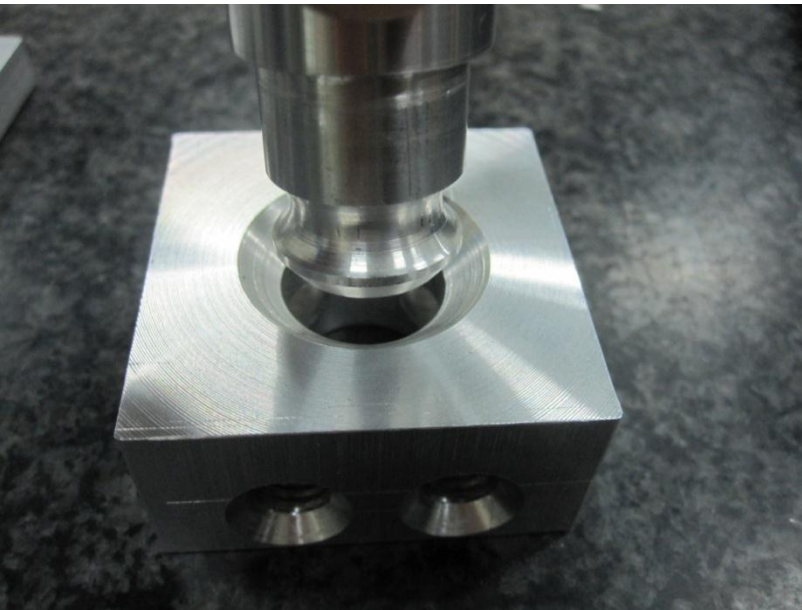


# Instalation test 5 september

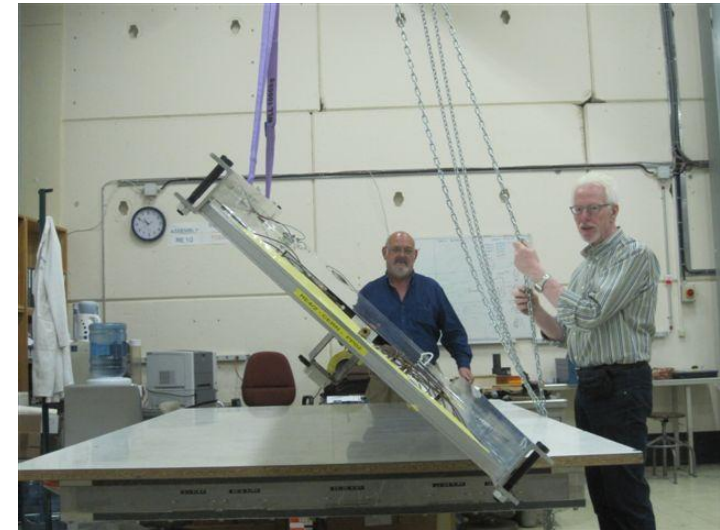
Change rotation pin -- Before : click system  
-- Now: with 2 screws

Need a long screw driver



Distance from posts to frame are: 245mm off yoke  
453mm on yoke

For manipulation 2 long U profiles – one on each side of chamber  
Attached directly on the chambers  
Fixation points in existing holes

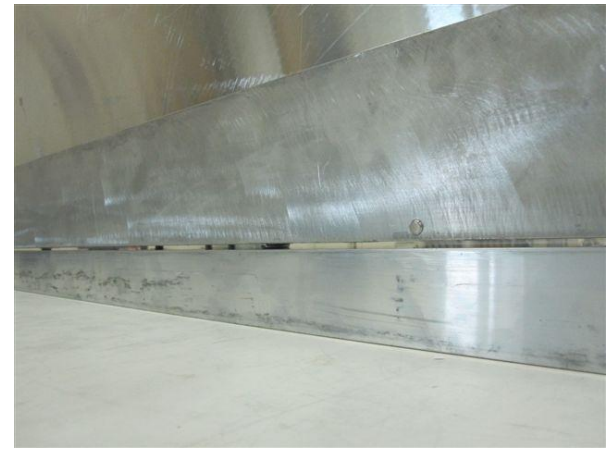
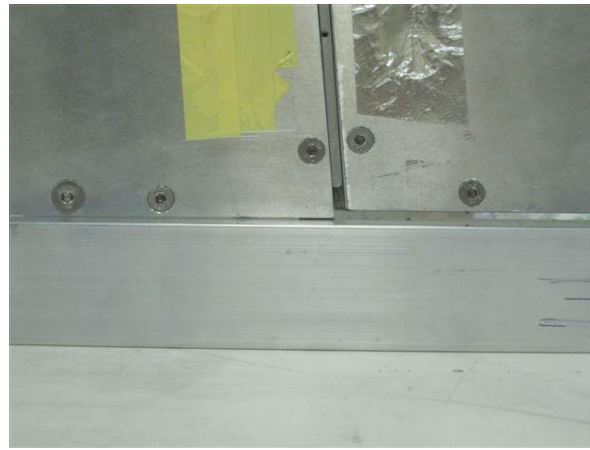
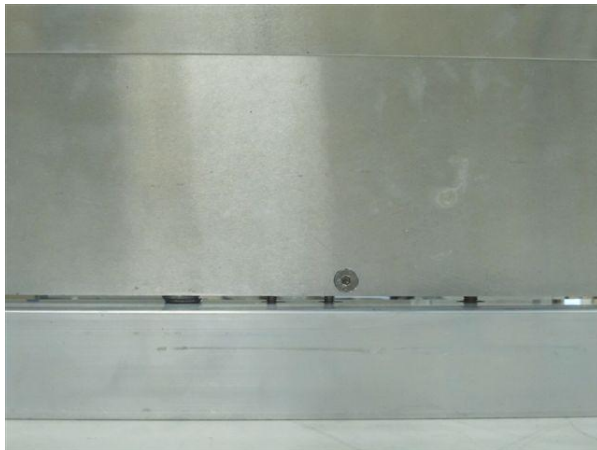


Bolts foreseen to pick up the frame in every position  
Foreseen wheels at the end of each U profile  
From horizontal to vertical position

What we have seen !!!

Position of frame in respect to the chamber is not good  
Play on both side of the U profile and chambers

Chambers and frame are prototypes  
Next batch of chambers are constructed with a CNC machine



One question is still open

Can we leave the U profiles on the chambers for installation on posts?

Have to see on assembly drawings of CSC and posts

Have we place enough or is there some interference

When the frame is installed on the posts, do we have place to remove the U profile

Dismount the wheels before installation when the frame is in position



Foreseen studs in 3 position

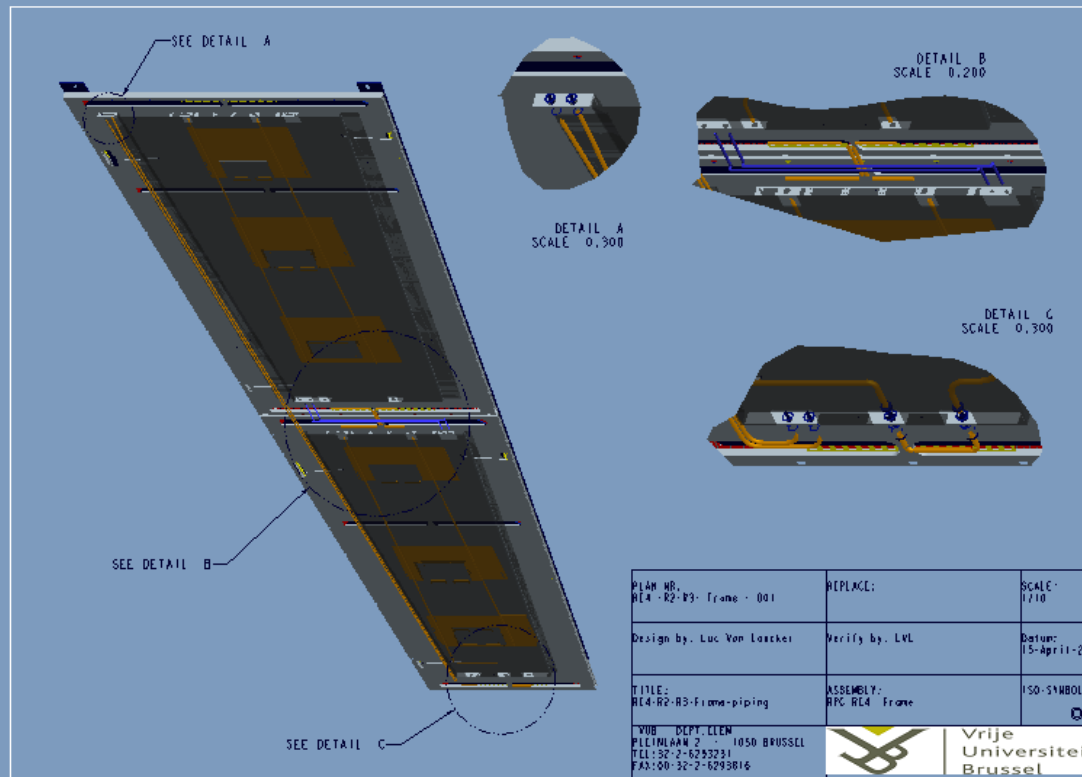
Vertical  
Horizontal  
30° degree

Testing of frame on wooden wall is  
not done ( no crane man-holiday)

Due to conference week no progress  
Shall make necessary drawings for U profile

General remark:

- The bar-R3-left is mounted upside down on chamber R3 – Prototype
- Gas tubes on frame from chamber2 to chamber3 are not done



SCALE: 0,100 TYPE: ASSEM NAME: RE4-R2-R3-FRAME SIZE: A3