

Andrey Marinov

On behalf of the CERN RPC Group

904 – CURRENT ACTIVITIES

ON GOING

- ✘ Mechanics from China
- ✘ Electricity in the Lab
- ✘ Gas in the Lab
- ✘ Cooling in the Lab

31. OCTOBER – RECEIVING THE MECHANICS FROM CHINA



MECHANICS RECEIVED

- RE 4/3 Box 4
- RE 4/2 Box 3

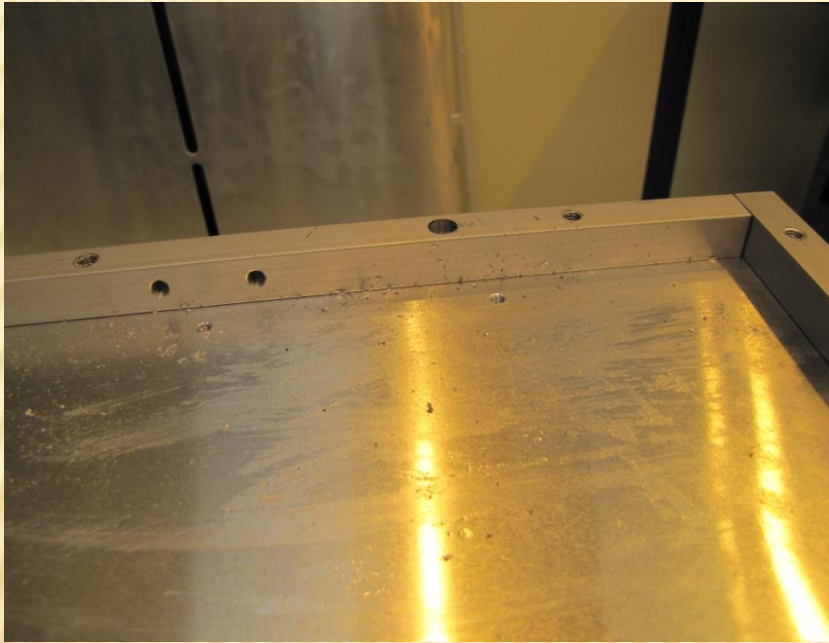
- Honeycomb Panel
 - RE 4/3 100 boxes
 - RE 4/2 75 boxes

- Copper Sheets
 - RE 4/3 100 sets
 - RE 4/2 75 sets

MECHANICS RECEIVED

- Honeycomb Panel Covers
 - RE 4/3 100
 - RE 4/2 75
- Readout Strips (PCB)
 - RE 4/3 100
 - RE 4/2 75

HONEY COMB BOXES STATUS



We have expected several boxes from each type. We found that inside lots of aluminum particles are left from the machining. Also they have very sharp edges which require shaping before use.

Non compatibility between the boxes of each type. It is not possible to swap mechanical elements from the same type (RE4/2 or RE4/3). There is mismatching of minimum 3mm between the different holes.

HONEYCOMB PANELS AND COVERS



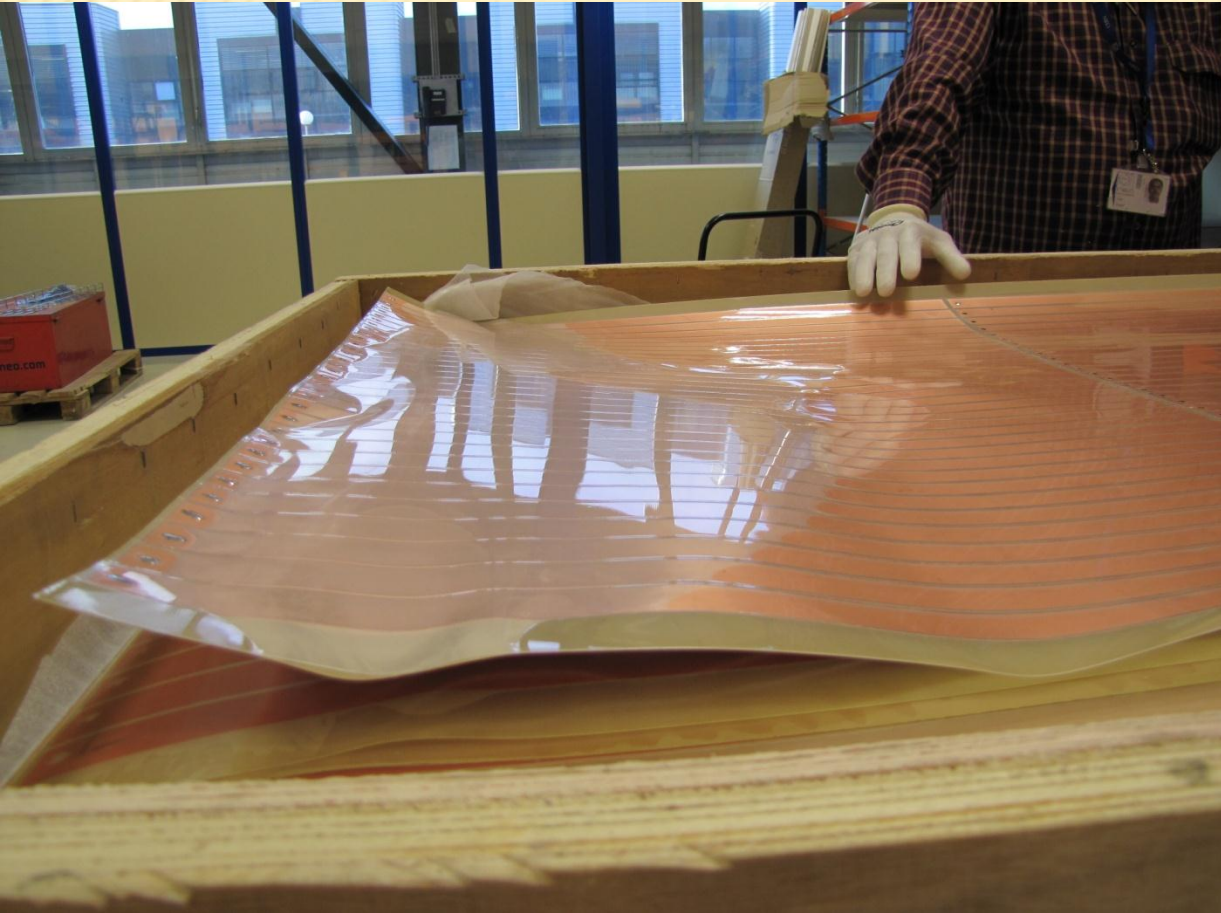
THE MECHANICS ATELIER



STORING THE READOUT BOARDS AND CU SETS (RE 4/3 AND RE 4/2) - INSIDE THE LAB.



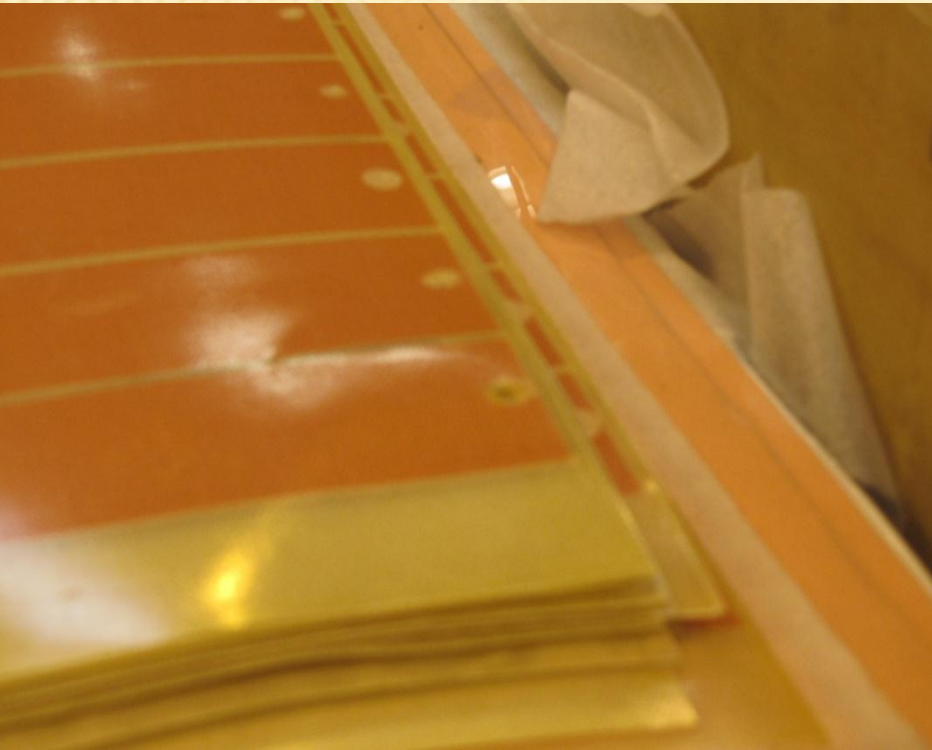
READOUT STRIPS BOARDS



All the 175 readout boards are non usable due to major problems

Non correct lamination

READOUT BOARDS



The strip's ends have no soldering points made by a special heat locating zones as they are in the previous productions like RE1, RE2 and RE3. Due to this it is not possible to localize the soldering temperature in one point and make the soldering with minimum heat. We have a situation that ALL the Cu Strips were over burned and their contact end has no more glue contact with the fiberglass base of the readout PCB.

Another error was that the soldering of the strips was done trough the laminated Mylar sheet, no openings were made for this.

FOIL SETS AND COVER SHEETS

- ✘ All the 175 Cover sheets and Cu foil sets for RE4/2 and RE4/3 are in good condition.

THE BOXES FROM CHINA

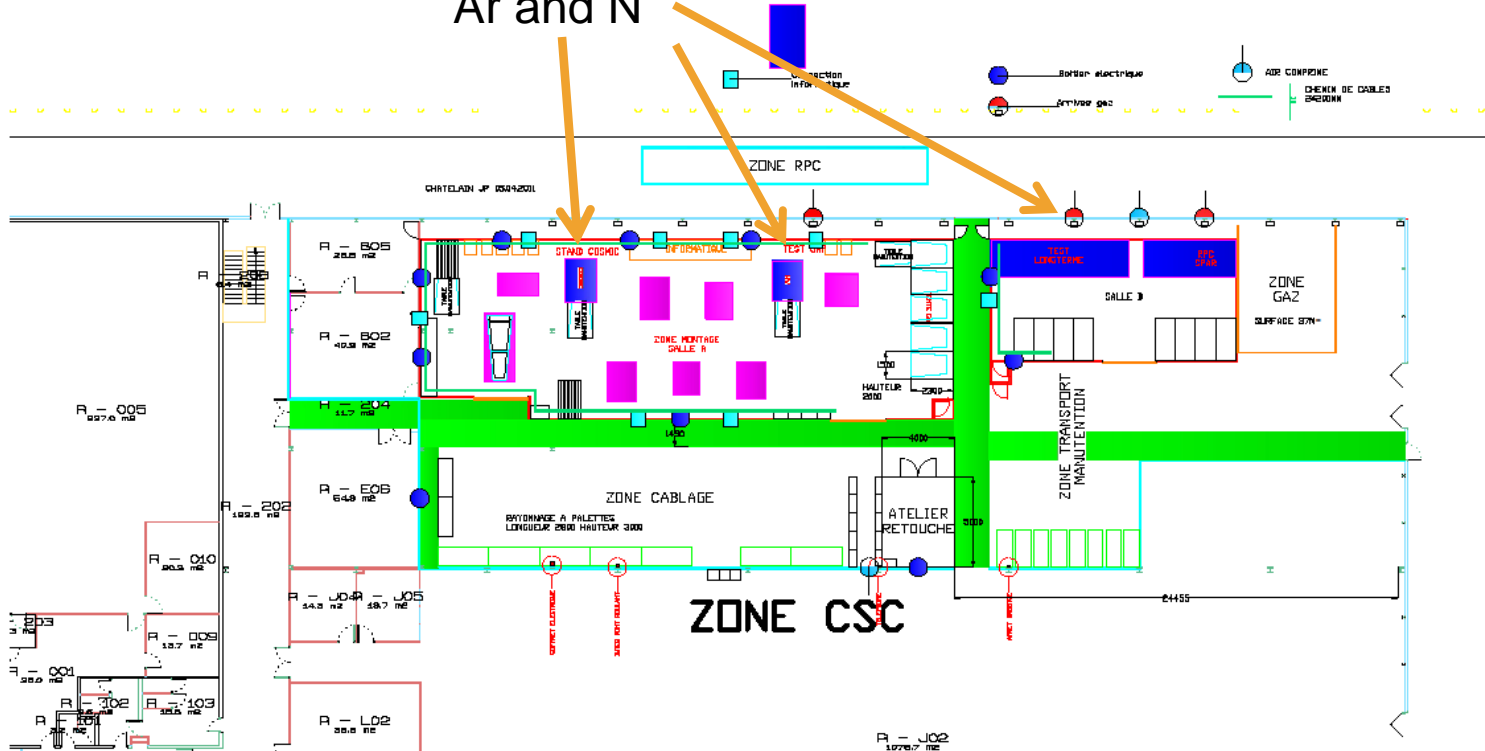


ELECTRICITY IN THE LAB

- ✘ SPIE Company resumed the work in 904 Lab after the Technical stop of LHC. We should have the electricity available inside the lab next week.
- ✘ All the work is going according to our Power Plan and needs.

GAS INSIDE THE LAB

12 channels – mixed
Ar and N



COOLING AND AIR CONDITIONING

- ✘ It is still on going. Unfortunately due to safety regulations we cannot enter inside the lab, before installing the inner AC elements.

THANK YOU
